

Supporting Online Material for

Heat shock protein D1 is up-regulated in various types of canine mammary tumors

Kaur, G.; Kumar, B. V. S. * and Gupta, K.

**To whom correspondence should be addressed: E-mail: sunilkumar@gadvasu.in*

Published Autumn 2024, Iranian Journal of Veterinary Research, 25(4): 368-375
DOI: 10.22099/ijvr.2024.50204.7404

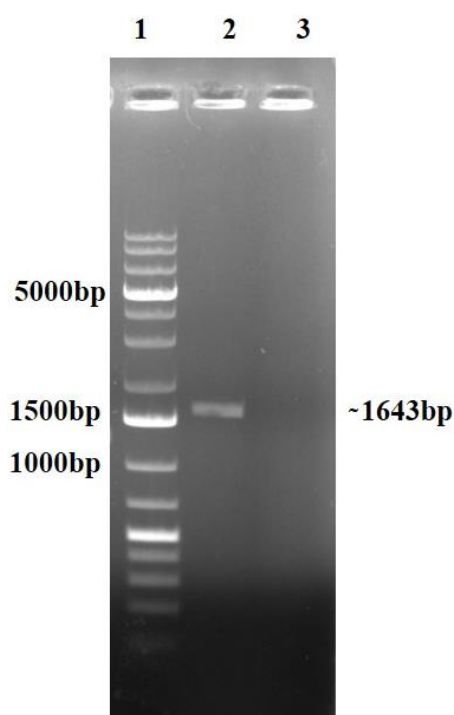
This PDF file includes:

Supplementary Figures 1 and 2 (SF1 and SF2)

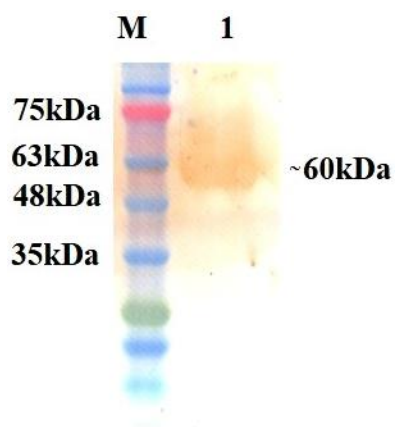
Supplementary Figures

SF1: Amplicon of *HSPD1* gene. Lane 1: 1 kb plus DNA ladder, Lane 2: ~ 1643 bp HSPD1 amplicon, and Lane 3: Non-template control (NTC)

SF2: Western Blot analysis of rHSPD1 protein by using IgG purified from hyperimmune sera raised against rHSPD1 in mice. Lane M: Pre-stained protein ladder, and Lane 1: Immuno reactive rHSPD1



SF1: Amplicon of *HSPD1* gene. Lane 1: 1 kb plus DNA ladder, Lane 2: ~ 1643 bp HSPD1 amplicon, and Lane 3: Non-template control (NTC)



SF2: Western Blot analysis of rHSPD1 protein by using IgG purified from hyperimmune sera raised against rHSPD1 in mice. Lane M: Pre-stained protein ladder, and Lane 1: Immuno reactive rHSPD1